

# *Centrifuges* for the *machine-tooling, metallurgical and plastics industries*

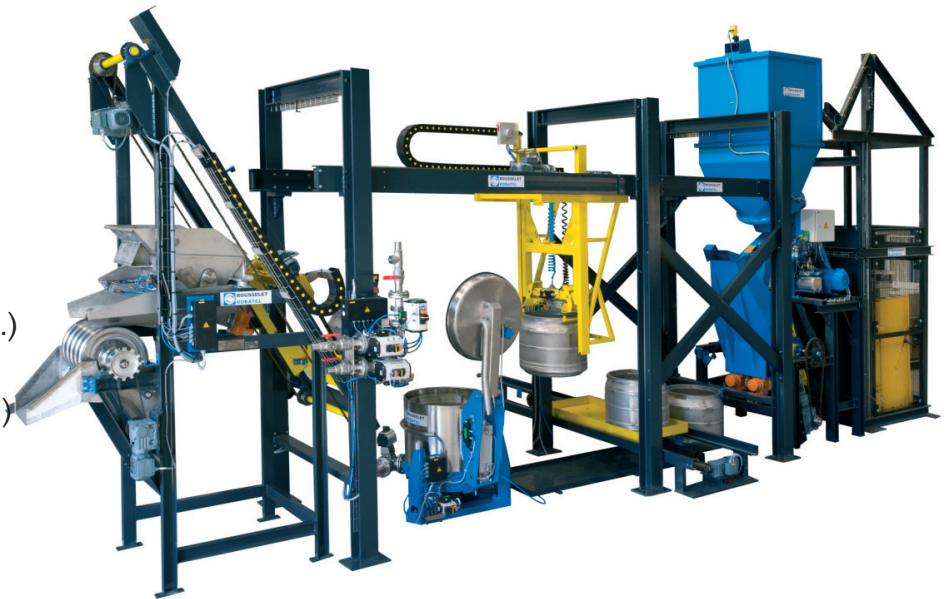


## *Treatment of pieces or chips: Centrifugal hydro-extractors*

- Chip de-oiling (oil recycling, chip recovery, iso 14000 standards)
- Part de-oiling after machining steps or prior to washing
- Washing/drying in machining operations
- Drying before washing or water immersion (plastic parts)
- Surface treatment:
  - Drying after immersion of parts in electrical operations
  - Product coating (finish, varnish, lubrication, anti-rust)
  - Drying prior to hot galvanizing or tinning

## *Liquid Purification or Sludge Treatment before Recycling or Recovery: Centrifugal Decanters*

- Various baths (electrochemical machining, finishing, phosphating, etc.)
- Various effluents or sludges (rectifying, wastewater, beverage, etc.)
- Oil purification



## MAIN BASKET CENTRIFUGE PRODUCT LINES

### • Operation

- MANUAL :** feeding, transfer, discharge from a removable basket by an operator
- ROBOTIC :** feeding, transfer, discharge from a removable basket with a robotic arm
- AUTOMATIC :** automatic feeding of parts and/or chips to a fixed basket which also has automatic discharge
- CONTINUOUS :** continuous feeding of chips to a fixed basket whose discharge is also continuous

### • Capacities:

Depending on the range :  
Baskets from ø 30 to 150 cm,  
up to 900 liters in total volume  
and 500 Kg loads

Maximum hourly throughput:  
up to 1500 Kg of parts and  
6.000 Kg of chips (brass)



CENTRIFUGE MODELS			TA/KC KCC2	SA/SC/KC KCC2	LSA/LEA RC/IEC	RC/SA/SC KCIMP	TA VO	TA/RC BO	SCPC	RC KG
Chip de-oiling			✓	✓			✓	✓	✓	
Part de-oiling			✓	✓	✓		✓	✓		
Washing/drying after machining operations				✓	✓	✓				
Drying of pieces			✓	✓	✓		✓			
Product coating/hydroextraction/drying					✓	✓				
Drying after hot galvanizing and tinning										✓
MODE	BASKET									
Manual	Removable	Operator	✓	✓	✓	✓				✓
Automatic	Removable	Robotic	✓	✓	✓	✓				
Automatic	Fixed	Automatic Feed/Discharge					✓	✓		
Continuous	Fixed	Continuous Feed/Discharge							✓	
SPECIFIC DOCUMENTATION			M6	M5	M9	M3	M4	M8	M7	M2

## MAIN DECANTER PRODUCT LINES

### • Operation:

Automatic discharge of the clarified liquid:  
by overflow or by liquid skimmer

### • Solids discharge:

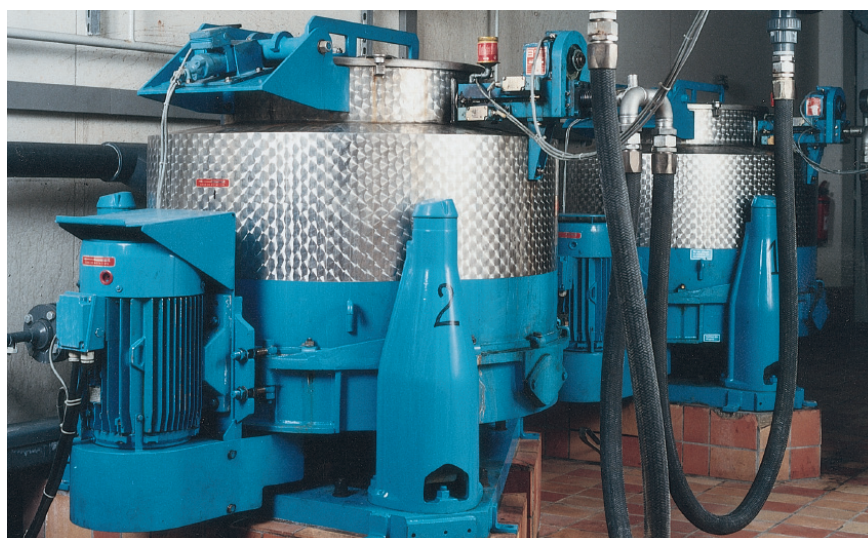
**manual:** sludge manually removed by the operator or with manual skimmer or with removable cage

**automatic:** sludge removed from the bowl by a motorized skimmer or by scraper

### • Capacities:

Depending on the range: bowls from ø 30 to 150 cm, up to 250 liters in sediment volume

Maximum hourly throughput: up to 27 m<sup>3</sup>/hr



DECANTER MODEL	SOLIDS REMOVAL	DOCUMENTATION
DRA, DRC et DSC... (15 man)	Manual or with manual skimmer	D
DRC et DSC - K (15)	By removable cage	D
DRA, DRC et DSC... (15 mot)	With motorized skimmer	D
DRC...BO et DRC / DSC...DEC	By scraper	D1 et C6

INDUSTRIES WHERE EQUIPMENT IS IMPLEMENTED: **AERONAUTICAL, AEROSPACE, AUTOMOBILE, ELECTRONICS, WATCH-MAKING, JEWELRY, CLOTHING, HOUSEHOLD ITEMS...**

**ROUSSELET ROBATEL ALSO DESIGNS AND MANUFACTURES CENTRIFUGES FOR THE CHEMICAL, PHARMACEUTICAL, TEXTILE, ENVIRONMENTAL, AND FOOD INDUSTRIES ... DO NOT HESITATE TO CONTACT US FOR ANY SOLID/LIQUID OR LIQUID/LIQUID SEPARATION PROBLEMS THAT YOU MAY HAVE...**

### ROUSSELET CENTRIFUGATION SA

Avenue Rhin et Danube  
PAE de Marenton  
07104 ANNONAY - FRANCE

+ 33 (0) 4 75 69 22 11

+ 33 (0) 4 75 67 69 80

E-mail rousselet.sa@rousselet.com

Web www.rousselet-robatel.fr

Great Britain :  
ROUSSELET ROBATEL UK Ltd

Parkside House, 17 East Parade  
HARROGATE  
NORTH YORKSHIRE HG1 5LF

+ 44(0) 1 423 530 093

+ 44(0) 1 423 530 120

sales@rousselet-robatel.co.uk

www.rousselet-robatel.com

Germany :  
ROUSSELET CENTRIFUGATION SA

Bierbacher Str. 30  
D-66424 HOMBURG-WÖRSCHWEILER

+ 49(0) 6848 730580

+ 49(0) 6848 730581

rousselet@t-online.de

www.rousselet-robatel.ru

USA :  
ROBATEL Inc.

703 West Housatonic Street  
PITTSFIELD  
MA 01201

+ 1 413 499 4818

+ 1 413 499 5648

sales@robatel.com

www.rousselet-robatel.cz

Czech Republic :  
ROUSSELET ROBATEL

Počernická 96  
CZ - 108 00 Praha 10

+420 296 411 402

+420 296 411 403

info@rousselet.cz