

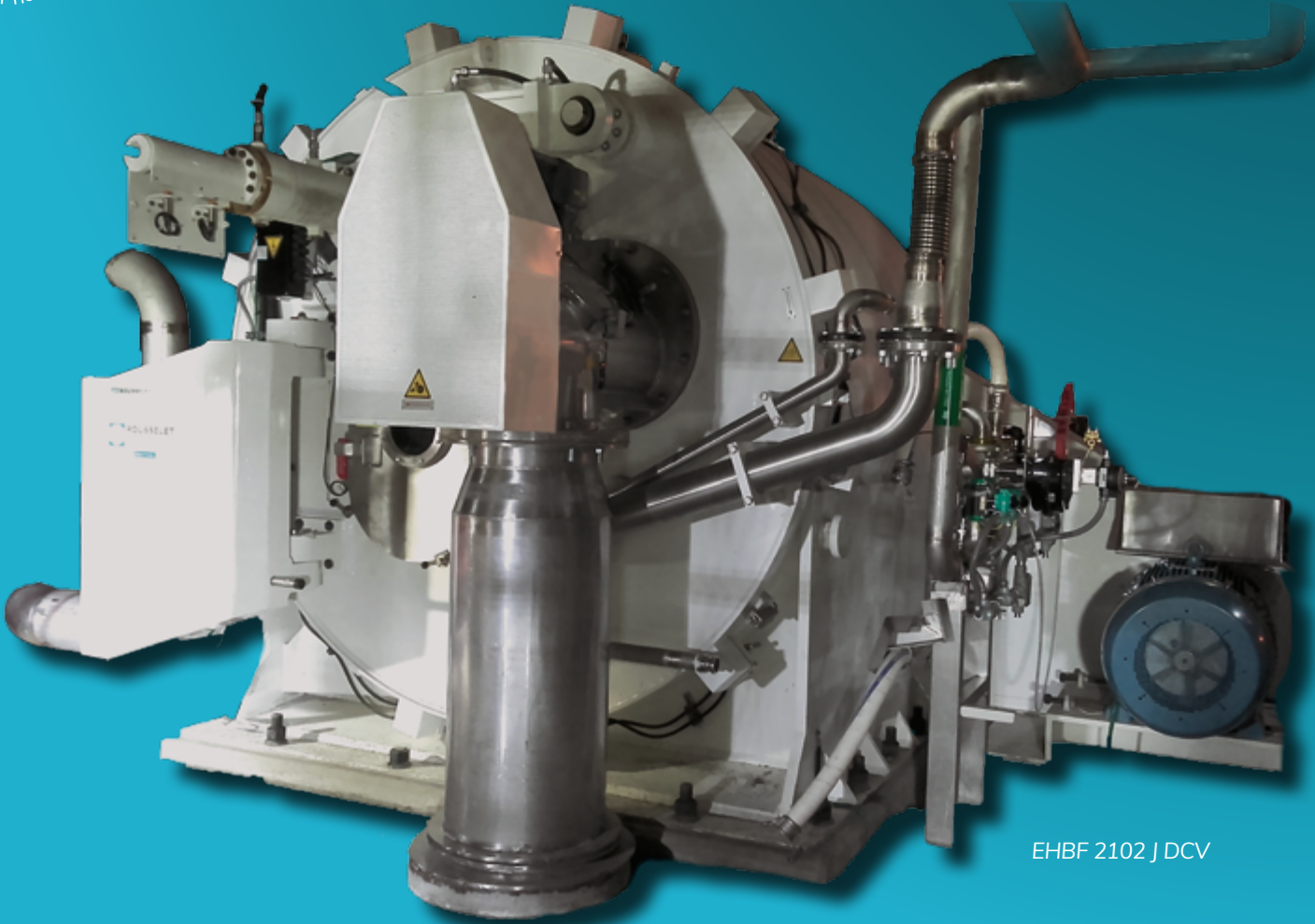
# HORIZONTAL AXIS PEELER CENTRIFUGES TYPE EH



Food industry



Chemicals & Pharmaceuticals



EHB 2102 J DCV

## KEY FEATURES OF EH TYPE CENTRIFUGES



### PRODUCTIVITY

- Ideal for mono product applications.
- Large diameter baskets with great useful volumes.
- Optimized cycle times (in some cases all cycle steps can be performed at high speed).



### EFFICIENCY

- Due to the high centrifugal forces generated, these centrifuges can achieve maximum cake dryness.



### RELIABILITY

- Required or integrated significant inertia mass.
- Outer casing design and assembly principle with fixed frame.
- Excellent stability and superior mechanical performance.

## GENERAL DESIGN OF EH TYPE CENTRIFUGES

### Scraper

Solid discharge :  
 - By means of a two motion reciprocating peeling knife (C) or one motion peeling plough  
 - By screw conveyor or through inclined chute

### Feeding pipe

for uniform solution distribution over the entire basket depth.

### Inclined chute (solid outlet)

### Front door

### Outer casing

### Perforated basket

### Centrifuge frame

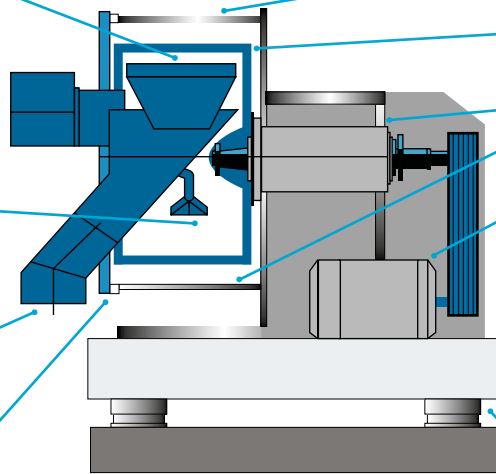
Driving motor connected to a frequency inverter for speed variation

### Inertia Slab

- Fixed frame requiring concrete slab (EHBF type) or  
 - self ballasted frame (EHBL type)

### Vibration isolators

EHBF-DRG



## TECHNICAL CHARACTERISTICS OF EH CENTRIFUGES

Type EH	Basket						
	ø mm	Depth mm	Useful volume L	Maximum load kg	Filtration area m <sup>2</sup>	Maximum speed rpm	Centrifugal force G
1322	1320	720	440	550	3	1235	1130
1662	1660	950	890	1110	5	1000	930
1762	1760	980	1040	1300	5.4	950	890
2102	2100	980	1500	1900	6.5	850	850
2102 J	2100	1120	1730	2100	7.4	850	850



### ADDITIONAL AND OPTIONAL EQUIPMENT

- Cake washing pipe.
- Cake detector.
- Residual heel removal device.
  - Overflow liquid discharge.
  - Skimmer pipe.
- Materials of construction or coatings, gasket materials.
- Tight or explosion-proof (ATEX in the EC) electrical equipment ATEX compliance.
- Vapor tightness for operation under inert gas blanketing.
- Inerting Control Systems.

### HEADQUARTERS

ROUSSELET ROBATEL  
 45 Avenue Rhin et Danube  
 Parc d'activité économique de Marenton  
 07104 ANNONAY - FRANCE  
 Tel. : +33 / (0) 4 75 69 22 11  
 Fax : +33 / (0) 4 75 67 69 80  
 E-mail : rousselet.sa@rousselet.com

### UK

Rousselet UK Ltd  
 Parkside House, 17 East Parade  
 HARROGATE  
 NORTH YORKSHIRE HG1 5LF  
 Tel. : + 44 (0)1 423 530 093  
 Fax : + 44 (0)1 423 530 120  
 E-mail : sales@rousselet-robatel.co.uk

### CZECH REPUBLIC

Rousselet Robatel CZ  
 Počernická 96  
 CZ – 108 00 Praha 10  
 Tel. : +420 296 411 402  
 Fax : +420 296 411 403  
 E-mail : info@rousselet.cz

### USA

Robatel Inc.  
 703 West Housatonic Street  
 PITTSFIELD  
 MA 01201  
 Tel. : + 1 413 499 4818  
 Fax : + 1 413 499 5648  
 E-mail : sales@robatel.com