



ROUSSELET ROBATEL

LABORATORY CENTRIFUGE RC 20 / RC 30 Vx



The laboratory centrifuge has been designed by ROUSSELET – ROBATEL for use in laboratories, pilot workshops specializing in fine chemicals, pharmaceuticals, food industry, biotechnology, research centers, schools and universities technological halls amongst others

Its versatility allows utilization for laboratory as well as pilot plant trials and even for small scale production. Material of construction according to industrial manufacturing standards, which enables it to perform under most arduous conditions: process of corrosive products, aggressive environments, exposable atmosphere...

Robust, reliable, used and easily maintained, this machine is characterized by its adaptability, thanks to some interchanging elements which allow it to process various solid/liquid separation problems.

General Features

- Rigid frame. Vertical axis centrifuge mounted on 4 anti-vibration rubber dampers.
- Basket Ø 200 mm (RC20) or Ø 300 mm (RC30) with removable filtration bag.
- Lid with E.P. sealing gasket and safety locking, feeding pipe and sight glass.
- Rotating basket driven by single speed side mounted motor and transmission via antistatic belt connected to a frequency inverter to achieve starting, braking and variable speed. All motors and electrical equipment mounted on the machine are water tight (IP55).
- Safety: centrifuge supplied with all safety devices according to latest European standards.
- Centrifuge manual operation by means of a control box set on the frame.
- Separate water tight cabinet
- Material: all product wetted parts including the outside frame are manufactured from stainless steel AISI 316.



TYPE	Basket Diameter (mm)	Basket Height (mm)	Useful volume (l)	Useful load (kg)	Maximum speed (rpm)	Length (mm)	Width (mm)	Height (mm)	Weight (kg)
RC 20	200	100	1,2	1,5	3000	780	440	645	130
RC 30	300	150	5,5	6,85	3000	780	440	645	130

Optional equipment

ATEX CONFORMITY / EXPLOSION PROOF EQUIPMENT:

Manufactured according to ATEX regulation (European Union countries) or supplied with explosion proof electrical equipment (countries outside the EU). Possibility to supply the control panel under explosion proof envelope

INERTIZATION:

The centrifuge can be gas-tight for gas under pressure (10 mbar) to receive nitrogen blanketed (relevant piping + lid and gasket suitable for improved sealing).

Possible supply of the inerting control system (ICS) and of the hydraulic siphon for sealing the outlet pipe

MATERIALS:

Other stainless steels or alloys for all product wetted parts. Lid seal from VITON, or VITON PTFE encapsulated, silicone and silicone rubber PTFE encapsulated.



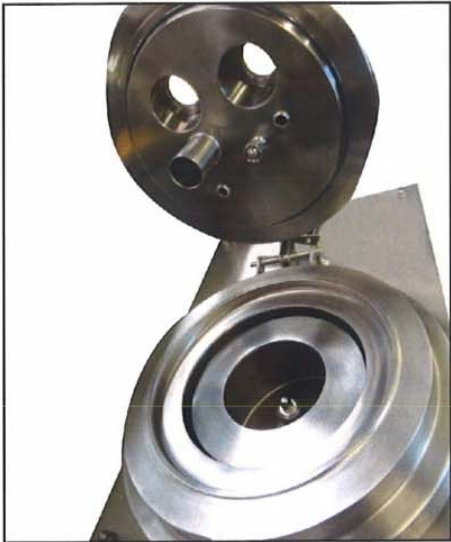
ACCESSORIES:

- Additional removable filtration bag for basket 200 or Ø 300mm manufactured with fabrics from different material and features.
- Standard decantation bowl Ø 200 mm (useful volume 1, 2 liter) or Ø 300 mm (useful volume 5, 5 liters) or bowl with top part designed with sets of 2 holes, plugged with screws, for different defined useful volumes.
- Liquid removal either by overflowing or by means of a manually controlled skimmer pipe (Ø 300 mm bowl only) or through two holes designed in the bowl plate.
- Test tube holder
- Feeding pipe adjustable in height and orientation
- Cake rinsing pipe with one or more adjustable spraying nozzles
- Inspection lamp on additional sight hole
- Clean In Place (CIP) pipe with rotating spray head
- Additional small piping on lid (vapor feeding)
- Cycle timer
- Mobile manual trolley manufactured from mild or stainless steel.
- Liquors discharge pump
- Anti-vibration safety device (accelerometer)
- Anti-noise protection (sound insulation plates on inner sides of the frame)
- Shaft protector






Specific Versions

- Double jacket shell, with or without thermal insulation
- Increased maximum speed: according to the centrifuge configuration, processed solution characteristics, and with ROUSSELET ROBATEL choice only, the centrifuge will be built with optional rotating rotor speed of 3.500 or 4.000 rpm
- Removable basket Ø 200 mm or Ø 300 mm, driven in rotation by a non removable basket carrier or bowl (for impregnation machine only) / maximum speed reduced to 1.500 rpm
- Rotor manufactured with specific shapes, dimensions and volumes
- Finish level as per customer request (improved mechanical polishing or electrolytic polishing)
- Centrifuge designed to incorporate a soft containment envelope with glove box or placed under a rigid glove box



ROUSSELET CENTRIFUGATION SA

Headquarters ROUSSELET CENTRIFUGATION SA	The U.K. ROUSSELET / ROBATEL U.K Ltd	Czech republic ROUSSELET CENTRIFUGATION S.A.	The USA ROBATEL Inc.
 45, Av. Rhin et Danube PAE de Marenton 07104 ANNONAY - FRANCE	Parkside House, 17 East Parade HARROGATE NORTH YORKSHIRE HG 1 5LF	Počernická 96 CZ-108 00 PRAGUE 10	703 West Housatonic Street PITTSFIELD MA 01201
 +33 (0) 4 75 69 22 11	+44 (0) 1 423 530 093	+420 296 411 401 / +420 296 411 402	+1 413 499 4818
 +33 (0) 4 75 67 69 80	+44 (0) 1 423 530 120	+420 296 411 403	+1 413 499 5648
E-mail rousselet.sa@rousselet.com	sales@rousselet-robatel.co.uk	info@rousselet.cz	sales@robatel.com

Web : www.rousselet.com - www.rousselet-robatel.com